

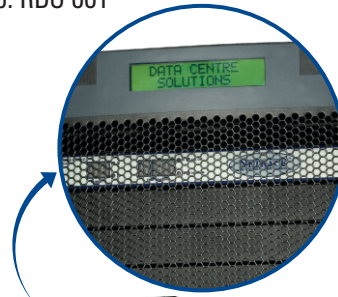
Overview

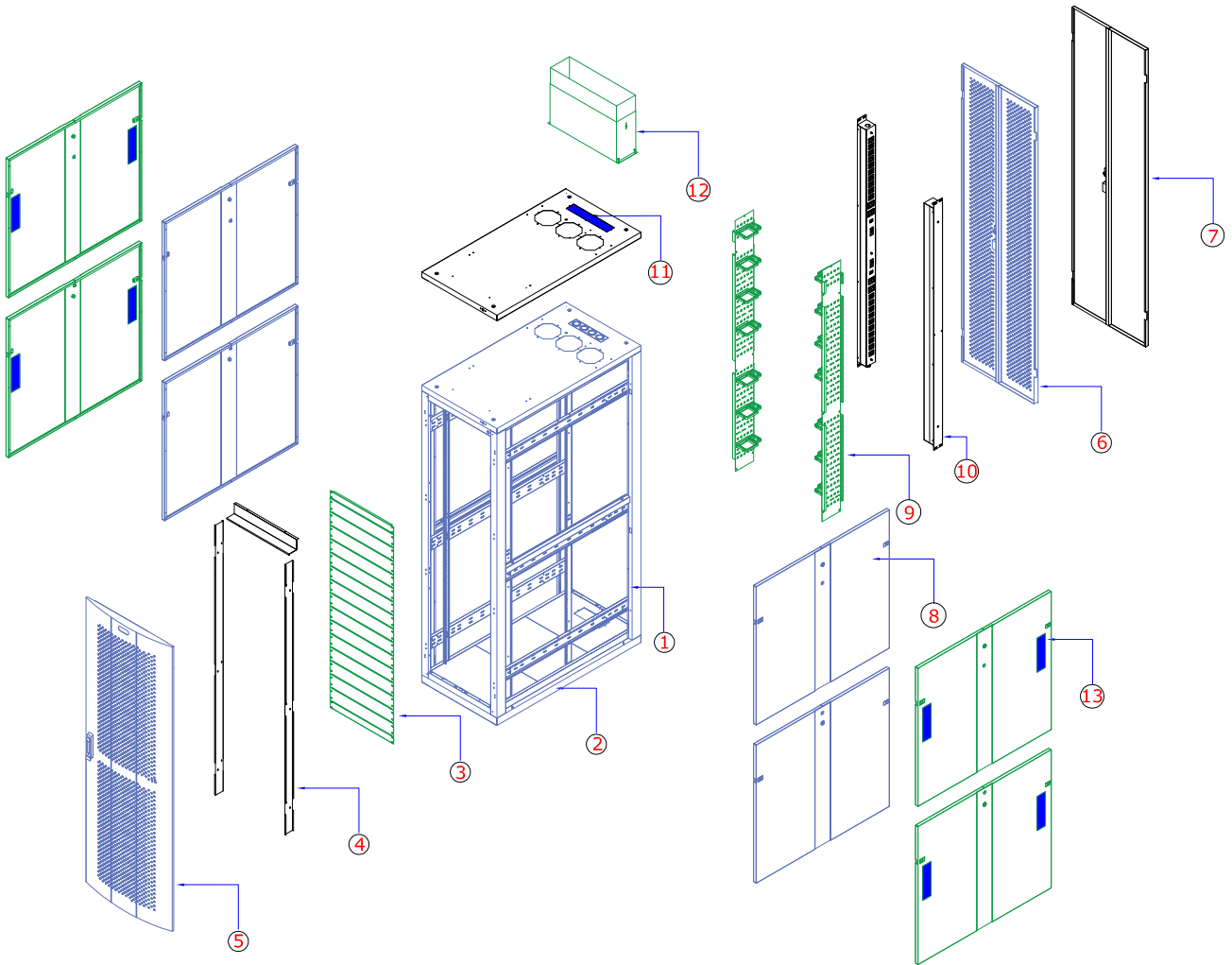
NRSe Series - Ultra rigid Enhanced Racks for high density application in data centers & server room. The Racks manufactured out of steel sheet punched, formed, welded and Powder coated with highest quality standards under stringent ISO 9001 | ISO 14001 | ISO 27001 | ISO 45001 Manufacturing & Quality management system to ensure highest quality product.

Standard for Racks configuration will be welded ultra rigid frame with 4 No. Pillars of 14 Gauge steel sheet 6 folded profile welded to top and bottom ribbed /reinforced frame additionally supported depth wise by welding 6 No. depth rail 4 folded 75mm 16 Gauge profile. Associated with Top cover having provision for Mounting Exhaust Blower and Adjustable duct for free exhaust of Hot Air through false ceiling to PAC unit, Front Convex perforated steel door with lock & key and Back perforated /plain dual steel door with lock & key and Plain dual side panels. Free standing on plinth.

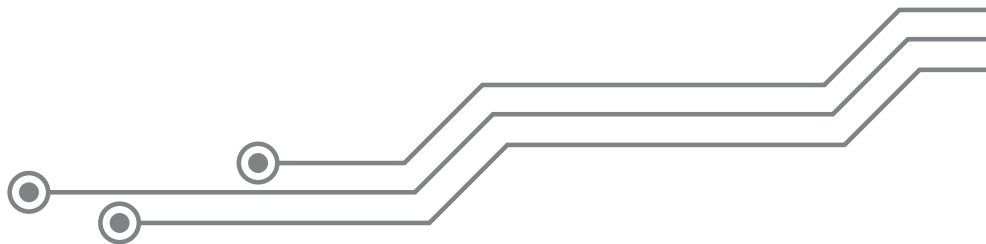
Available in 42RU ~ 52RU Variants with 1000 & 1200 Depth configurations and 600 width configurations.

Rack Display Unit - 144 X 33 mm,
32 Charecters in 2 line Programmable.
Part No. RDU 001





1. Rack Frame
2. Plinth
3. Blank Panel
4. Front Air Seal Kit
5. Perforated Convex Door
6. Perforated Dual Door
7. Metal Door
8. Side Panel Split
9. Universal Cable Basket
10. Power Distribution Unit
11. Brush Module Bottom/ Top
12. Roof Blower Module
13. Brush Module Side Panel



Model Matrix & Dimensions									
NRS-e Series	H	h	W	w	w1	D	d	d1	Plinth Height(MM)
22U 600X1000	1116	22U	600	19"	451	1000	900	725	50/100
22U 600X1200	1116	22U	600	19"	451	1200	1100	725	50/100
24U 600X1000	1205	24U	600	19"	451	1000	900	725	50/100
24U 600X1200	1205	24U	600	19"	451	1200	1100	725	50/100
27U 600X1000	1338	27U	600	19"	451	1000	900	725	50/100
27U 600X1200	1338	27U	600	19"	451	1200	1100	725	50/100
30U 600X1000	1471	30U	600	19"	451	1000	900	725	50/100
30U 600X1200	1471	30U	600	19"	451	1200	1100	725	50/100
32U 600X1000	1560	32U	600	19"	451	1000	900	725	50/100
32U 600X1200	1560	32U	600	19"	451	1200	1100	725	50/100
34U 600X1000	1649	34U	600	19"	451	1000	900	725	50/100
34U 600X1200	1649	34U	600	19"	451	1200	1100	725	50/100
36U 600X1000	1738	36U	600	19"	451	1000	900	725	50/100
36U 600X1200	1738	36U	600	19"	451	1200	1100	725	50/100
38U 600X1000	1828	38U	600	19"	451	1000	900	725	50/100
38U 600X1200	1828	38U	600	19"	451	1200	1100	725	50/100
40U 600X1000	1916	40U	600	19"	451	1000	900	725	50/100
40U 600X1200	1916	40U	600	19"	451	1200	1100	725	50/100
42U 600X1000	2005	42U	600	19"	451	1000	900	725	50/100
42U 600X1200	2005	42U	600	19"	451	1200	1100	725	50/100
44U 600X1000	2094	44U	600	19"	451	1000	900	725	50/100
44U 600X1200	2094	44U	600	19"	451	1200	1100	725	50/100
45U 600X1000	2138	45U	600	19"	451	1000	900	725	50/100
45U 600X1200	2138	45U	600	19"	451	1200	1100	725	50/100
46U 600X1000	2183	46U	600	19"	451	1000	900	725	50/100
46U 600X1200	2183	46U	600	19"	451	1200	1100	725	50/100
47U 600X1000	2227	47U	600	19"	451	1000	900	725	50/100
47U 600X1200	2227	47U	600	19"	451	1200	1100	725	50/100
48U 600X1000	2271	48U	600	19"	451	1000	900	725	50/100
48U 600X1200	2271	48U	600	19"	451	1200	1100	725	50/100
50U 600X1000	2360	40U	600	19"	451	1000	900	725	50/100
50U 600X1200	2360	50U	600	19"	451	1200	1100	725	50/100
52U 600X1000	2449	52U	600	19"	451	1000	900	725	50/100
52U 600X1200	2449	52U	600	19"	451	1200	1100	725	50/100

Note :

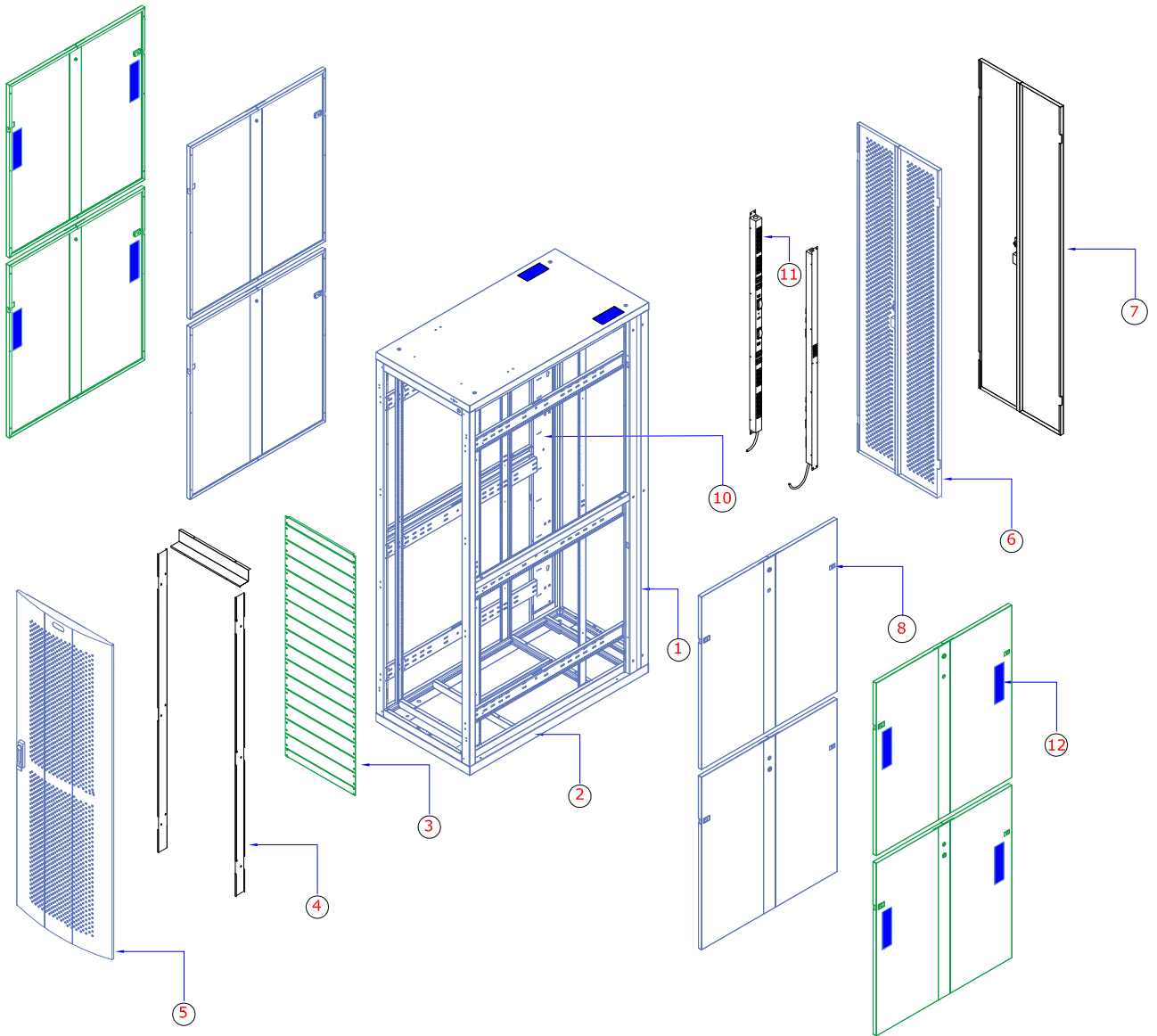
1. Overall Height = Frame Height+ Plinth
2. It is recommended to distribute the Load along with U space in the Rack
3. Dimension are in MM

Abbreviations

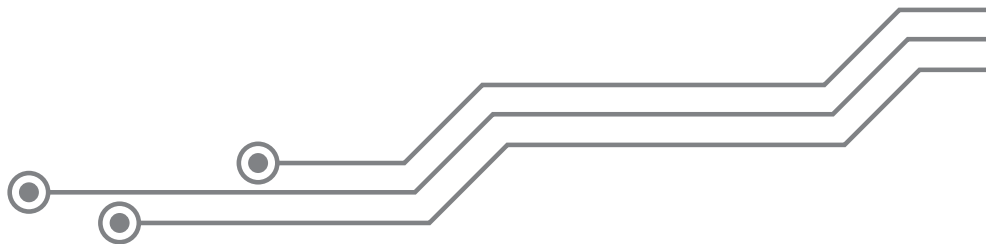
Frame Height	H	Usable width Between Front MTG. Angles	w1
Usable Height	h	Overall Depth	D
Overall width	W	Usable Depth	d
Usable width	w	Usable Depth From Mounting Angle to Angle	d1

NRSe 600W 002 Series

High Density Closed Rack Solutions



1. Rack Frame
2. Plinth
3. Blank Panels
4. Air Seal Kit
5. Perforated Radius Door
6. Perforated Dual Door
7. Plain Dual Door
8. Side Panel Dual
9. Side Panel Dual (Brush Module)
10. Combo Cable Basket 002
11. PDU

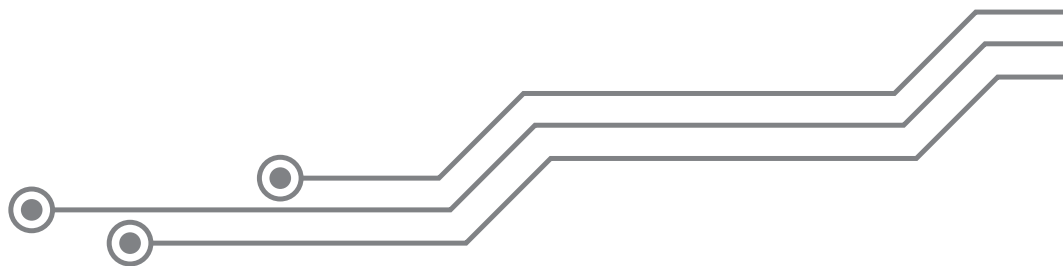


Model Matrix & Dimensions									
NRSe 002 Series	H	h	W	w	w1	D	d	d1	Plinth Height(MM)
22U 600X1000	1116	22U	600	19"	451	1000	900	725	50/100
24U 600X1000	1205	24U	600	19"	451	1000	900	725	50/100
27U 600X1000	1338	27U	600	19"	451	1000	900	725	50/100
30U 600X1000	1471	30U	600	19"	451	1000	900	725	50/100
32U 600X1000	1560	32U	600	19"	451	1000	900	725	50/100
34U 600X1000	1649	34U	600	19"	451	1000	900	725	50/100
36U 600X1000	1738	36U	600	19"	451	1000	900	725	50/100
38U 600X1000	1827	38U	600	19"	451	1000	900	725	50/100
40U 600X1000	1916	40U	600	19"	451	1000	900	725	50/100
42U 600X1000	2005	42U	600	19"	451	1000	900	725	50/100
44U 600X1000	2094	44U	600	19"	451	1000	900	725	50/100
45U 600X1000	2135	45U	600	19"	451	1000	900	725	50/100
46U 600X1000	2183	46U	600	19"	451	1000	900	725	50/100
47U 600X1000	2227	47U	600	19"	451	1000	900	725	50/100
48U 600X1000	2271	48U	600	19"	451	1000	900	725	50/100
49U 600X1000	2316	49U	600	19"	451	1000	900	725	50/100
50U 600X1000	2360	50U	600	19"	451	1000	900	725	50/100
51U 600X1000	2405	51U	600	19"	451	1000	900	725	50/100
52U 600X1000	2449	52U	600	19"	451	1000	900	725	50/100

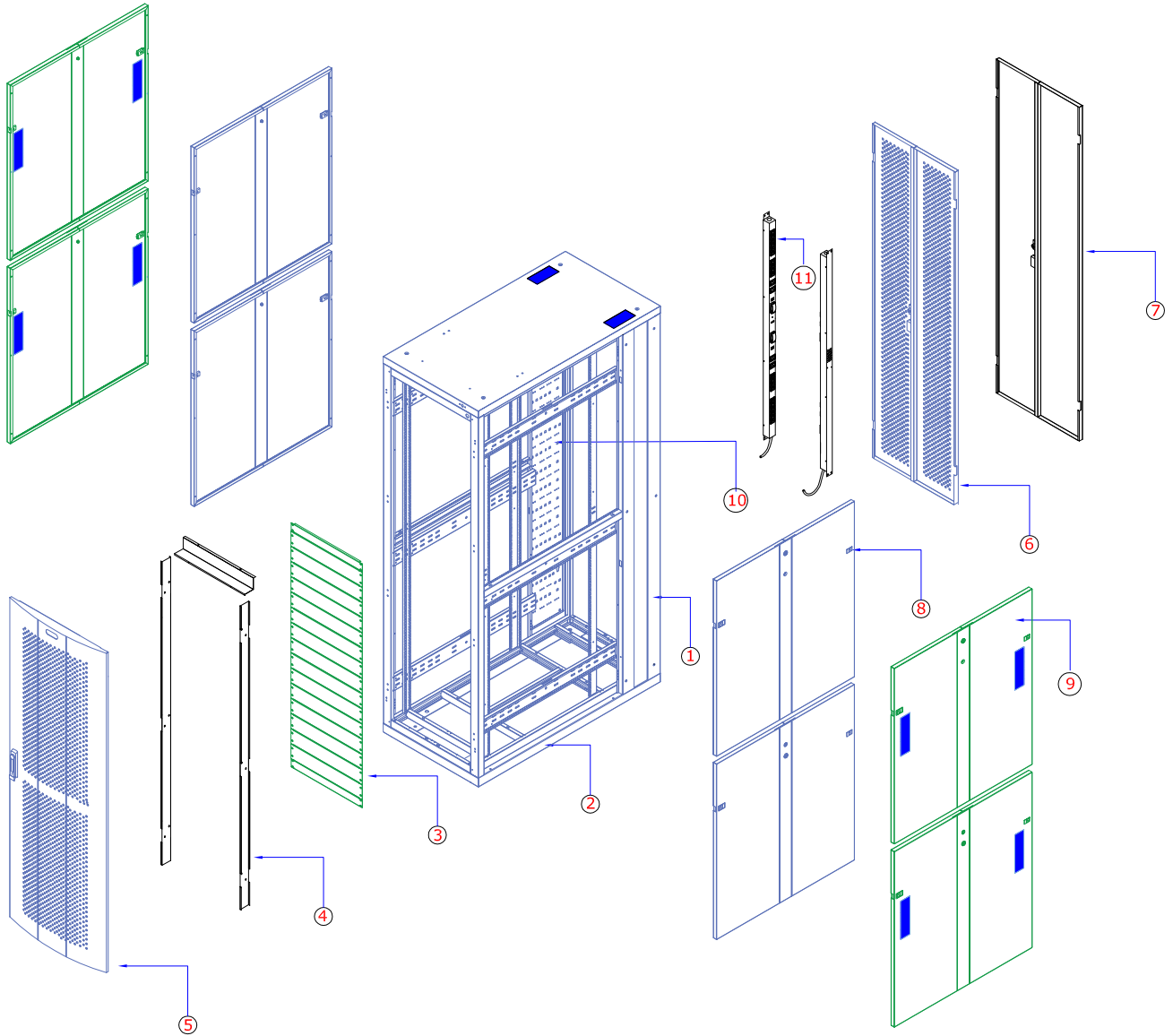
Note: 1. Overall Height = Frame Height+Plinth

Abbreviations

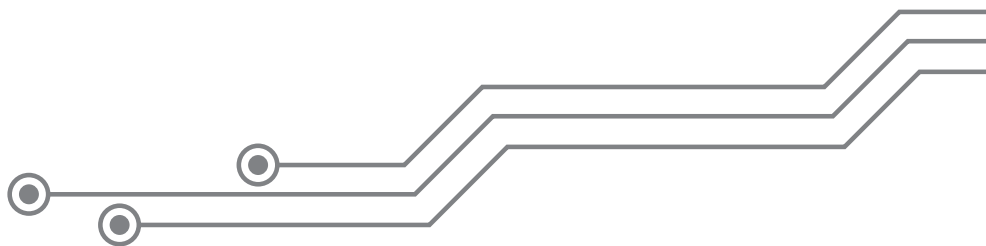
- H - Frame height
- h - Usable height
- W - Overall width
- w - Usable width
- w1 - Usable width Between Front MTG.Angles
- D - Overall Depth
- d - Usable Depth
- d1 - Usable Depth From Mounting Angle to Angle



NRSe 600W 003 Series



1. Rack Frame
2. Plinth
3. Blank Panels
4. Air Seal Kit
5. Perforated Radius Door
6. Perforated Dual Door
7. Plain Dual Door
8. Side Panel Dual
9. Side Panel Dual (Brush Module)
10. Combo Cable Basket - 003
11. PDU

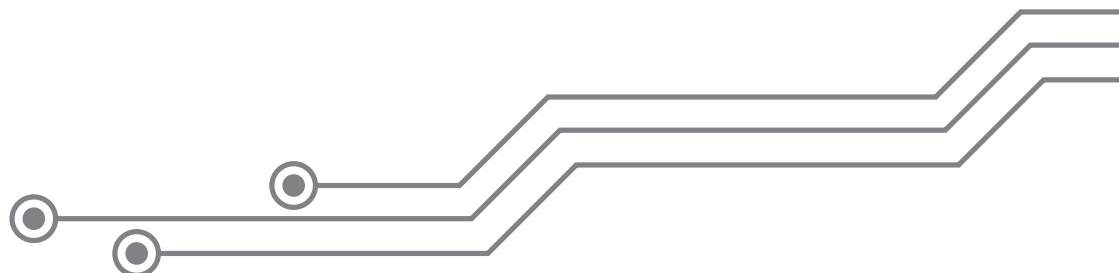


Model Matrix & Dimensions									
NRSe 003 Series	H	h	W	w	w1	D	d	d1	Plinth Height(MM)
22U 600X1200	1116	22U	600	19"	451	1200	1100	725	50/100
24U 600X1200	1205	24U	600	19"	451	1200	1100	725	50/100
27U 600X1200	1338	27U	600	19"	451	1200	1100	725	50/100
30U 600X1200	1471	30U	600	19"	451	1200	1100	725	50/100
32U 600X1200	1560	32U	600	19"	451	1200	1100	725	50/100
34U 600X1200	1649	34U	600	19"	451	1200	1100	725	50/100
36U 600X1200	1738	36U	600	19"	451	1200	1100	725	50/100
38U 600X1200	1827	38U	600	19"	451	1200	1100	725	50/100
40U 600X1200	1916	40U	600	19"	451	1200	1100	725	50/100
42U 600X1200	2005	42U	600	19"	451	1200	1100	725	50/100
44U 600X1200	2094	44U	600	19"	451	1200	1100	725	50/100
45U 600X1200	2135	45U	600	19"	451	1200	1100	725	50/100
46U 600X1200	2183	46U	600	19"	451	1200	1100	725	50/100
47U 600X1200	2227	47U	600	19"	451	1200	1100	725	50/100
48U 600X1200	2271	48U	600	19"	451	1200	1100	725	50/100
49U 600X1200	2316	49U	600	19"	451	1200	1100	725	50/100
50U 600X1200	2360	50U	600	19"	451	1200	1100	725	50/100
51U 600X1200	2405	51U	600	19"	451	1200	1100	725	50/100
52U 600X1200	2449	52U	600	19"	451	1200	1100	725	50/100

Note: 1. Overall Height = Frame Height+Plinth

Abbreviations

- H - Frame height
- h - Usable height
- W - Overall width
- w - Usable width
- w1 - Usable width Between Front MTG.Angles
- D - Overall Depth
- d - Usable Depth
- d1 - Usable Depth From Mounting Angle to Angle



eNhancements

- eNhanced Thermal management with Air Seal Kit and Blanking panels & Bottom Brushed access eNhanced Grounding & Bonding
- eNhanced Standalone Cable management
- eNhanced for Alpha Numeric Rack Display system on Front Door
- eNhanced for CAC or HAC
- eNhanced for Roof Blowers with adjustable Chimney. (400 to 1350 CFM)
- eNhanced for Back Door Blowers (800 to 1950 CFM) (Optional)
- eNhanced for Intelligent Locking and Rack Monitoring

Features

- Conforms to DIN 41494 or Equivalent EIA /ISO / EN / CEA Standard
- Adjustable mounting depth
- 4 No Adjustable, 19" verticals with Punched 10 mm Square Hole and Universal 12.7mm-15.875mm-15.875mm alternating hole pattern offers greater mounting flexibility, maximizes usable mounting space.
- Numbered U positions
- State-of-the-art manufacturing methods provide the best product quality and fastest delivery in the industry
- 100% assured compatibility with all equipments conforming to DIN 41494 (General industrial standard)
- Powder coated finish with Seven tank pretreatment process meeting ASTM standard

Technical Data:

Basic Frame	Steel folded
Construction	Welded
Top & Bottom Cover	Bolted to Frame with required cut outs.
Front Door	Lockable Convex Perforated Steel Door
Rear Door	Lockable Perforated / Plain Steel Dual Door
19" Mounting Angle	Formed Steel
Std. Equipment Mounting	DIN Std. 10 mm Sq. Slots
Standard Finish	Powder coated
Standard Colour	Texture Black
Standard Mounting	Free standing on Plinth
Rack Standard	Conforms to DIN 41494 or equivalent standard
Static Load	1500 Kg